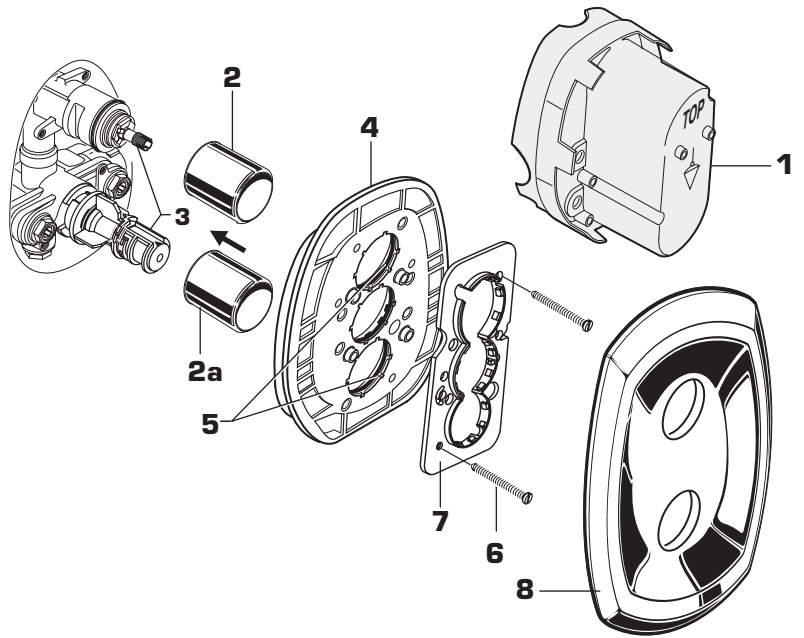


***Failure to follow these care instructions may damage the Faucet's finish.***

# 1

## TRIM INSTALLATION

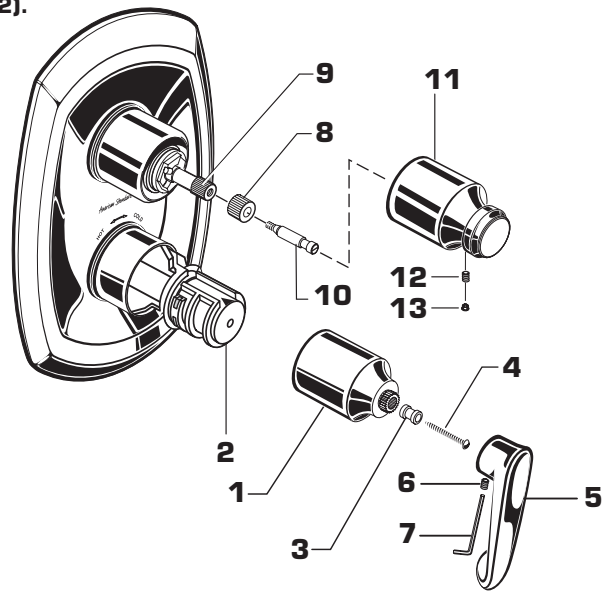
- Remove PLASTER GUARD **(1)** if attached.
- Push CAPS **(2 & 2a)** as shown onto CONTROL VALVES **(3)**.
- Push ESCUTCHEON HOLDER **(4)** with lightly greased O-RING SEALS **(5)** over CAPS **(2, 2a)**.
- Attach the FIXATION PLATE **(7)** to the ESCUTCHEON HOLDER **(4)** with the two SCREWS **(6)** provided.
- Push ESCUTCHEON **(8)** flush against finished wall.



# 2

## INSTALL HANDLES

- Align and install HANDLE BASE **(1)** onto TEMPERATURE CONTROL KNOB **(2)**.
- Install HANDLE ADAPTER **(3)** onto HANDLE BASE **(1)** and tighten with SCREW **(4)**.
- Align HANDLE **(5)** and push onto HANDLE ADAPTER **(3)**.
- Tighten SET SCREW **(6)** in handle with HEX WRENCH **(7)** SUPPLIED.
- Install HANDLE ADAPTER **(8)** onto VALVE STEM **(9)**.
- Install HANDLE SCREW **(10)** and tighten.
- Push VOLUME CONTROL KNOB **(11)** onto HANDLE ADAPTER **(10)**. Use HEX WRENCH **(7)** supplied and tighten SET SCREW **(12)** to secure VOLUME CONTROL KNOB **(11)**.
- Push in PLUG BUTTON **(13)**.

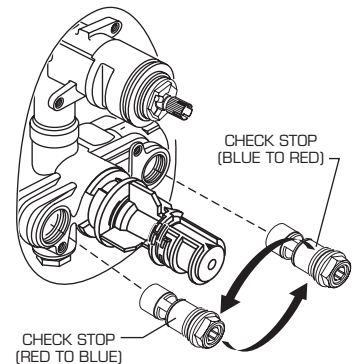


# 3

## TRANPOSED SUPPLY PIPING OR BACK TO BACK INSTALLATION

*Should the hot and cold water supply pipes have been transposed making adjustment impossible, proceed as follows:*

- Shut off water supply.
- Remove handle and rim. (Reverse steps 1 and 2.)
- Remove check stops and re-install them transposed.
- Important note: RED CHECK STOP is now on the right of the mixer body and the BLUE CHECK STOP is now on the left.
- Turn the water supply back on and perform the temperature adjustment in step 4.
- Assemble HANDLES and TRIM.

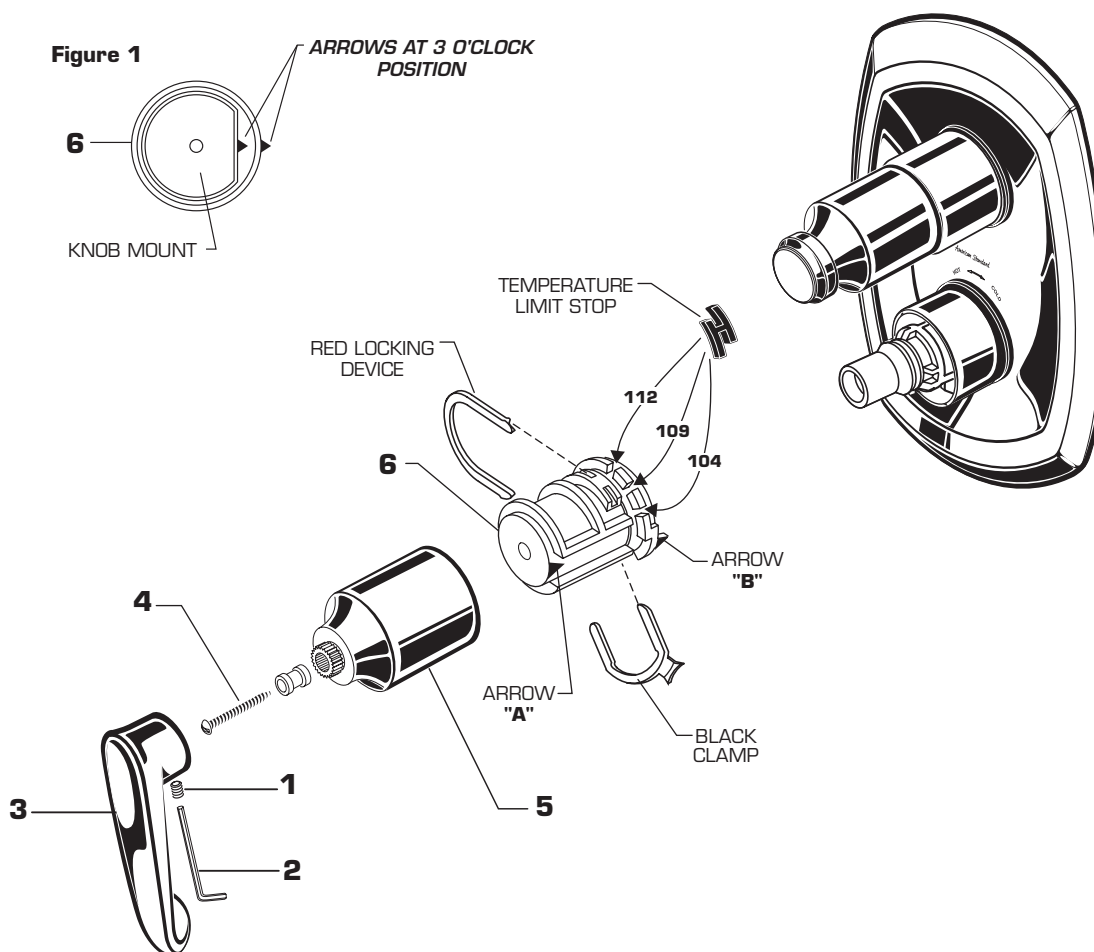


## 4 TEMPERATURE ADJUSTMENT

- Loosen SET SCREW (1) with HEX WRENCH (2). Pull off HANDLE (3). Remove HANDLE SCREW (4) and pull off HANDLE BASE (5).
- Check that arrow marking B points to the 3 o'clock position. If not, push the RED CLAMP on the SECURING RING to the right, pull off KNOB MOUNT (6) and reinstall KNOB MOUNT (6) with arrow "B" 3 o'clock position. *See Figure 1.*

### SET HOT LIMIT STOP

- The maximum mixed water temperature is set at 109°F at the factory. This setting can be changed if desired.
- Remove the TEMPERATURE LIMIT STOP (H shaped Red Plastic part). Reinstall it at the desired notch as indicated in the diagram to limit the maximum mixed water temperature to 104°F or 112°F.
- For 100°F adjustment, turn the water supply on. Turn KNOB MOUNT (6) until the spout temperature is 100°F. Check that arrow "A" on the KNOB MOUNT (6) still points 3 o'clock position after adjusting the thermostat to 100°F. If not, pull out the RED LOCKING DEVICE. Remove KNOB MOUNT (6) by pulling it towards you while standing directly in front of the valve.
- Reinstall the KNOB MOUNT (6) with arrow "A" 3 o'clock position.
- Reinstall RED LOCKING DEVICE.
- See step 2 for HANDLE (3) installation.

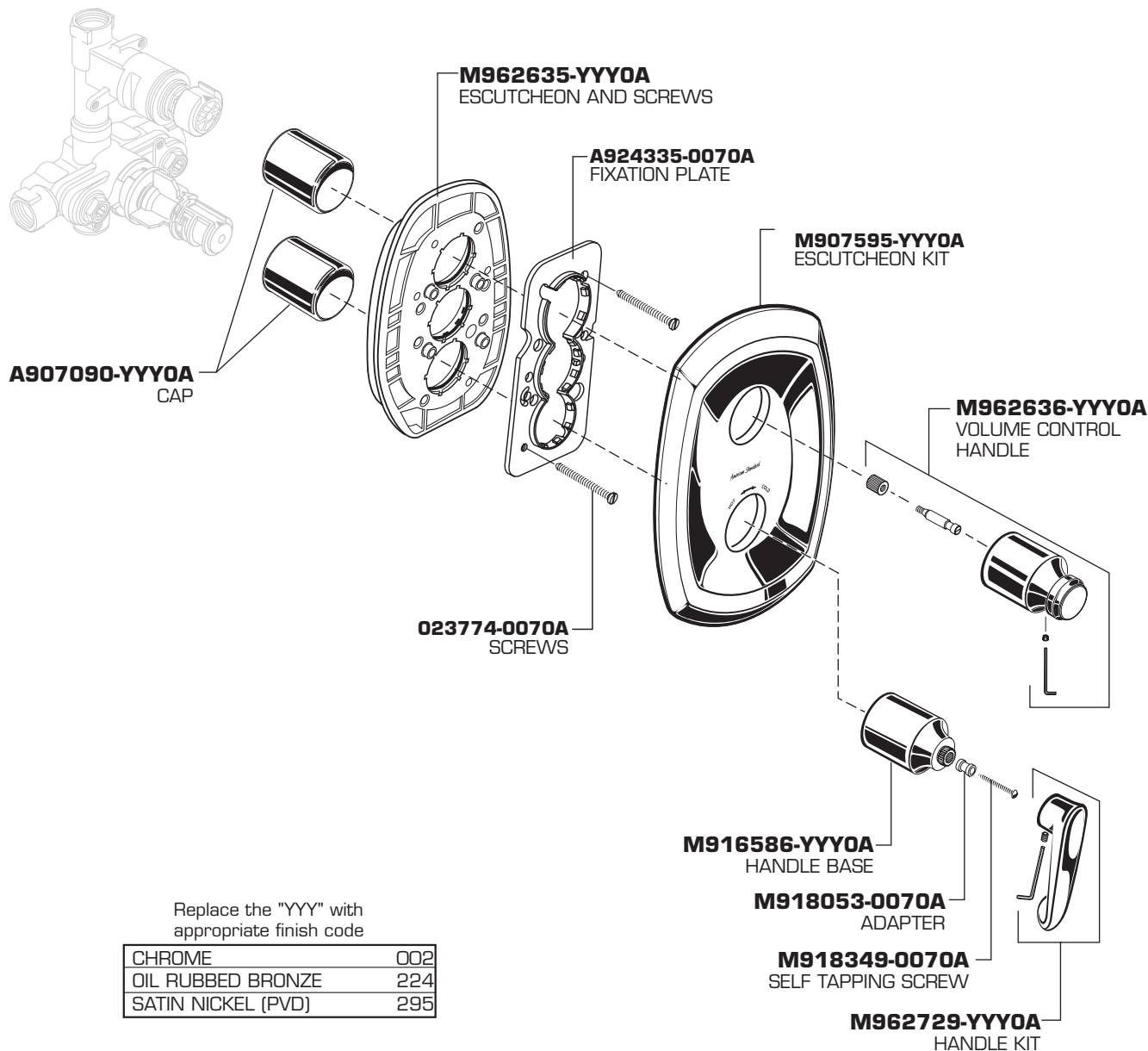


*American Standard*

# COPELAND CENTRAL THERMOSTAT WITH VOLUME CONTROL TRIM KIT

MODEL NUMBER

**T005.740**



Replace the "YYY" with  
appropriate finish code

CHROME	002
OIL RUBBED BRONZE	224
SATIN NICKEL (PVD)	295



## HOT LINE FOR HELP

For toll-free information and answers to your questions, call:  
1-800-442-1902  
Weekdays 8:00 a.m. to 6:00 p.m. EST  
IN CANADA 1-800-387-0369 (TORONTO 1-905-306-1093)  
Weekdays 8:00 a.m. to 7:00 p.m. EST  
IN MEXICO 01-800-839-1200

Product names listed herein are trademarks of American Standard Inc.  
© AS America, Inc. 2008

M968015 REV.1.2 (1/15)